

# Now & Then



Issue 4, November 2012

Affiliated with Royal Historical Society of Victoria Inc

2012/2013

## Meeting Dates

December 1  
February 2  
March 2  
April 6  
May 4  
June 1  
July 6 (AGM)  
August 3  
September 7  
October 5  
November 2  
December 7

All meetings are held on the 1st Saturday of the month (except as shown above) and at 1 pm at the Old Lilydale Court House 61 Castella St., Lilydale.

## Inside this issue

New displays.....2  
GunAlley.....3  
Books for sale .....4

*Lilydale & District Historical Society*  
P.O Box 834,  
Lilydale Vic 3140  
email:  
[info@lilydalehistorical.com.au](mailto:info@lilydalehistorical.com.au)  
or  
[suethompson50@ozemail.com.au](mailto:suethompson50@ozemail.com.au)

website: [www.lilydalehistorical.com.au](http://www.lilydalehistorical.com.au)

Contacts:  
President: 9735 1661  
Secretary: 9761 9192

Proudly supported by



Issue 4 November 2012



Games at Lilydale Swimming Pool. Note the gasworks building in the background.

## Launch of Faces, Places and Events project

On Sunday, November 25, at 2.30pm the society will officially launch its Faces, Places and Events photographic galleries on its website.

The society recognised the need to increase its revenue base when it moved into its new home and promoting and selling photographs from the society's 4000 or so images is one vital way to generate income and also promote our history.

The society successfully received a grant from the Shire of Yarra Ranges through its Community Grants Program which funded this project.

Our webmaster Paradigm4 has worked with Sue Thompson and others to make the project

a reality. When launched, people from throughout Australia and worldwide can see and order copies of our images.

Sandy Ross who has worked tirelessly collecting the photographs since the society's inception in 1971, had the onerous task of selecting the photos for our 15 galleries - businesses, vineyards and agriculture,

Silvan, Seville, recreation, Melba, Lilydale Views, Industries, families, events, Gruyere/Killara, Chirside Park, Coldstream, Walks, Talks and Tours, new Acquisitions and Yering. To date 180 plus images will be put on line with more to come.

*Turn to page 3 to see more of our images.*

### 75 years of funeral care

Robbie and his son Gavan continue the family tradition

For a fixed price funeral plan and brochures

Phone: 9800 3000

733 Boronia Rd, Wantirna

Phone: 9739 7799 Lilydale

[www.heritagefunerals.com.au](http://www.heritagefunerals.com.au)



**HERITAGE  
&  
HERITAGE  
FUNERALS**

## Research

Due to the increasing demand for research and the failure of some people to pay for the information provided, the society's executive has now introduced a new system to ensure any inquiries are handled quickly and efficiently and payment is received.

All inquiries must be in writing and go to our archivist Sandy Ross at [aross35@bigpond.com](mailto:aross35@bigpond.com) Sandy will contact the people involved and provide a written quotation. No research will be done until the quotation is paid.

Our charges are \$20 per hour.

Anyone with any queries can contact Sandy 9735 1661 or Sue Thompson 9761 9192.

## Gun Alley project

The society is now collecting information and photographs of the families and homes in John Street area locally known as Gun Alley.

The photos can be of families, businesses, homes and people along John Street from the Olinda Creek to Hutchinson Street.

If your family lived there and you have information or family photos you would like to make available for the project, please call or email Sue Thompson 9761 9192 [suethompson50@ozemail.com.au](mailto:suethompson50@ozemail.com.au)

## Keep up to date

If you want to find out more information about the society, our local history, its people and places or about Dame Nellie Melba go to:

[www.lilydalehistorical.com.au](http://www.lilydalehistorical.com.au)

[www.nelliemelbamuseum.com.au](http://www.nelliemelbamuseum.com.au)

We can advise and arrange insurances on your behalf including Home & Contents, Private & Commercial Motor Vehicle, Farm, Business Insurance, Liability and much more.

When your insurances are due for Renewal give us a call.

**Wilkinson Insurance Brokers**  
286 Main Street, Lilydale  
Telephone: 9735 6333 Fax: 9735 3544



## Court House Report

The following stats were recorded for August, September & October:

Volunteer duty hours	595
Visitors	184
Talks at other venues	5
People at the talks	240
Cemetery tour	1
Car tour	1
Gun Alley research	191 hours.

Thank you to all the volunteers who helped during the year on the roster, doing talks and carrying out research.

## Over Due

To ensure you receive invitations to our functions, please renew your membership. If your Now & Then had a red dot, it means your subscription is now overdue. To renew simply fill out the form on the back of the magazine or call into the Old Lilydale Court House during our opening hours and pay our volunteers.

## Our Christmas Party

Although it will be almost Christmas, keep Saturday, December 1 free as that is the day of our Christmas party. During the last couple of years, the boys have built an enviable reputation of being able to cook fantastic turkey in the Webber. Couple that with the ladies wonderful desserts and salads, it is a great Christmas party and costs only \$12.50 a person or \$25.00 a couple. Starts at 11.30am BYO drinks.

## New displays

The new display panels are now in place and have been attracting a lot of attention. The family of Sgt Waters who lost two young sons on Christmas Day 1891 are planning a re-union just to see the display they helped us erect in memory of their ancestors. Other displays feature never before seen photos from the John Hutchinson family photo album and images provided by Mt Lilydale College.

Copies of photos of Coldstream Hill donated by Jackie Mitchell are on display as are the stories of our early butchers, bakers and dairies.



**Trevor Dudleys**  
established 1952

Classic Menswear Formalwear & Hire

**Peter Ruscitti**

166 - 168 Main Street, Lilydale Victoria 3140  
Ph: 03 9735 1136 Fax: 03 9735 0668

**Lilydale Travel Centre**

License No. 32743  
AFTA Member  
IATA Accredited



See the World from Lilydale

**Ian Garbett**  
Manager

219 Main Street Lilydale Vic 3140  
Email: [lilydaletravel@bigpond.com](mailto:lilydaletravel@bigpond.com)

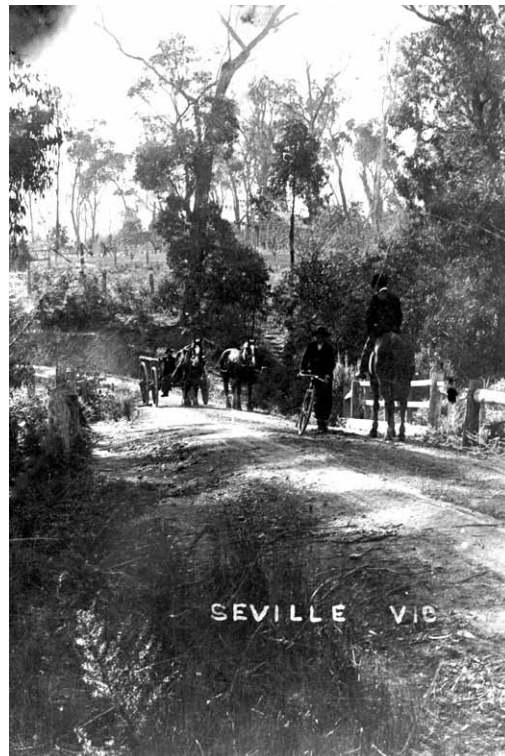
Tel: 03 9735 1144  
Fax: 03 9735 3201



Minstrels in the lower Main St, Lilydale. Two storey building in the background is the first building west of Olinda Creek on the south side of lower Main St. No. 00486



Last train from Lilydale to Warburton August 1, 1965 organised by the Australian Railway Historical Society. No. 06090



Station Road, Seville. Ron Ingram with bike; Charlie Hand and horse and dray returning from railway station after unloading wood and sticking it at the siding. No. 00936

## Images from Faces, Places and Events

*On behalf of all the committee we wish members, their families, friends and supporters a safe and happy Christmas and New Year.*



The Perrin family 1902 at Lilydale. Eldest son (top right) Oswald, youngest son Eric (on rocking horse). No. 01296

statewide  
**Locksmiths**

255 main st., lilydale victoria 3140  
 4 railway pl., ringwood victoria 3134

**locks, keys, safes & service**

tel: (03) 9739 5555  
 fax: (03) 9739 5502

Since 1995 Paradigm 4 has been providing advice on website design, site hosting and e-commerce to individuals and businesses throughout the Yarra Valley.

For more information  
 Phone: 9555 4408 Fax: 9751 2371  
 Email: [webwork@paradigm4.com.au](mailto:webwork@paradigm4.com.au)  
 Website: [www.paradigm4.com.au](http://www.paradigm4.com.au)

If undeliverable return to:  
Lilydale & District Historical Society  
P.O. Box 834, Lilydale Vic 3140

**Now & Then by email**

With the rising costs of paper and postage, the society is inviting members who are happy to receive their newsletter by email to contact Sue Thompson at [suethompson50@ozemail.com.au](mailto:suethompson50@ozemail.com.au) and I will email a copy to you. Back copies are also available electronically.

## Books for sale this Christmas

Reminiscences of Life Volume 2	\$12.00
Reminiscences of Life Volume 1	\$14.50
Prosperity & Progress - The history of the former Shire of Lillydale offices	\$5.00
Lilydale Primary School Register	\$15.00

All are available from the Old Lilydale Court House, 61 Castella St, Lilydale. For a complete list of our publications visit our website at [www.lilydalehistorical.com.au](http://www.lilydalehistorical.com.au) and place an order.

## Your Membership

Members are the life blood of any organisation and that includes your society.

As a member you receive many benefits:

- Free access to our extensive archive of families, places and events in our community;
- Free access to our digital archives such as the Lillydale Express and rate books;
- Four issues each year of our newsletter

Now & Then by either mail or email

- Invitations to all our special events, talks and tours;
- Discounts on all our publications; and
- Opportunity to learn more about our local history.

Renew your membership or invite a friend to join our society today by filling out the form below.

## Membership Subscription 2012-2013 now due

**Membership Subscriptions 2012-2013 are due on the 1<sup>st</sup> July 2012.** (If you are not sure if you are financial, please ring Lorraine on 9735 1104 to check.)

Name of Member: \_\_\_\_\_

Address: \_\_\_\_\_

Telephone: \_\_\_\_\_

Family Membership .....	\$20.00
Single membership .....	\$15.00
Pensioners .....	\$10.00
Students (under 16 years) .....	\$5.00

Amount enclosed: \$ .....

**SEND TO:**  
The Treasurer  
Lilydale & District  
Historical Society  
P.O. Box 834,  
LILYDALE 3140

Lilydale & District  
Historical Society Inc  
P.O. Box 834,  
Lilydale Vic 3140  
email:  
[info@lilydalehistorical.com.au](mailto:info@lilydalehistorical.com.au)  
website:  
[www.lilydalehistorical.com.au](http://www.lilydalehistorical.com.au)